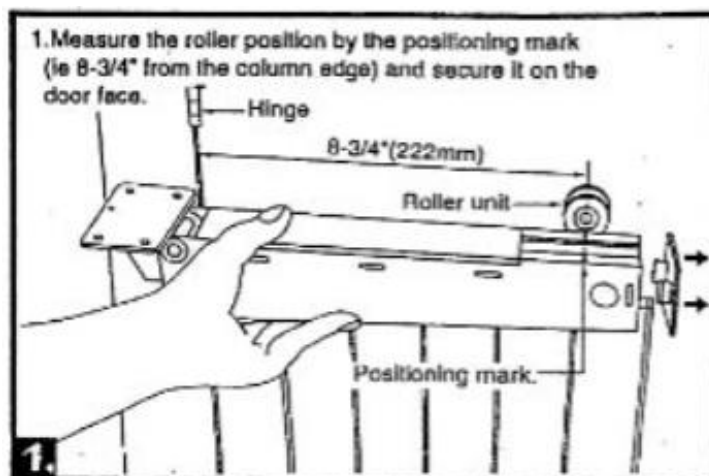


Gate Closer GC670 – Installation Guide

Suitable for Residential / Light Commercial Gates (Up to 120 lbs)

Step 1: Position the Closer

Install on the hinge (pull) side of the gate.
Place approx. 45 mm from the corner.
Ensure the closer is level.

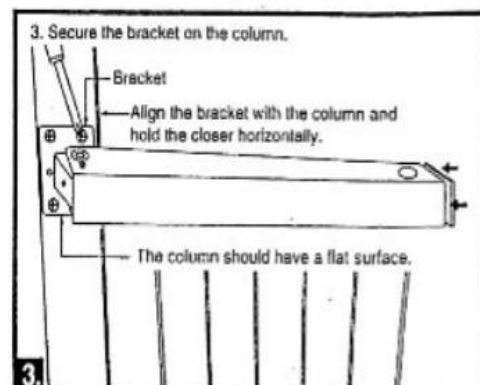
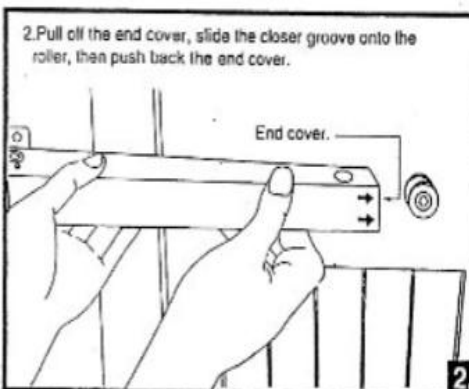


Step 2: Prepare the Gate

If needed, cut a small notch.
Slide the closer onto the gate and secure.

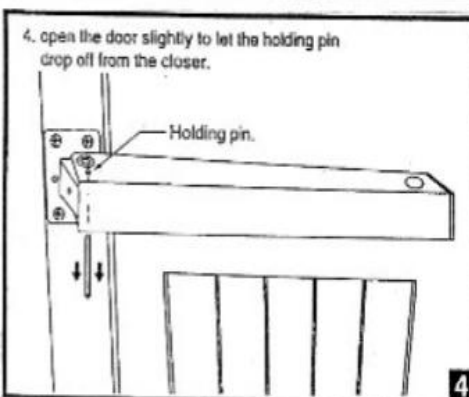
Step 3: Fix the Bracket

Mount bracket onto the post.
Align with closer arm.
Ensure flat surface.



Step 4: Insert Holding Pin

Open gate slightly.
Insert holding pin to keep position.

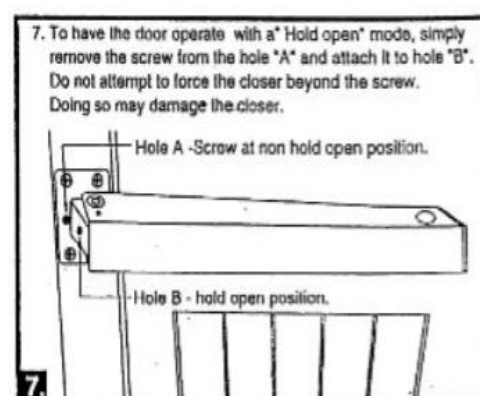
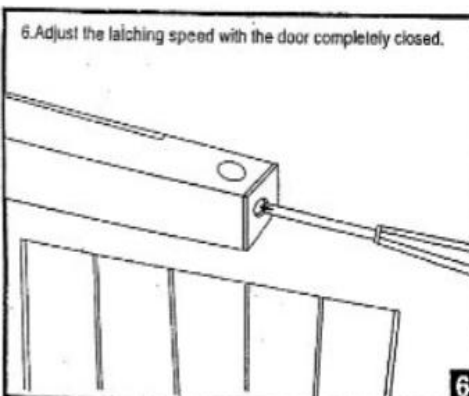


Step 5: Adjust Closing Speed

Open gate ~45°.
Adjust speed screw slowly.

Step 6: Adjust Latching Speed

Close gate fully.
Adjust final closing speed.



Step 7: Hold-Open Feature (Optional)

Move screw from Hole A to Hole B.
Do NOT force gate open.